



## Nexus® 200 Recycling Bin

### DESIGN FEATURES

- Supplied with 2 x 100 litre zinc-coated steel liners.
- Slimline design.
- Robust construction - double skinned body and doors.
- Features two 3-point interlocking slam shut doors.
- Colour-coded apertures and clear graphics.
- Curved hood prevents littering.
- Single keyed twin door opening system.
- Extended aperture ledges help to ensure litter enters the liner.
- Anti-flyposting finish.
- Includes four A3 poster frames with Recycle Now graphics.

### OPTIONAL EXTRAS

- Ashtray in gun metal grey or gold colour.
- 2 x Glasdon FireSafe™ automatic suppression device.
- 2 x 100 litre moulded plastic liner.
- Aperture blanking panel.
- Sack retention.
- Base tray.
- Choice of ground fixing options.
- Oxo-degradable bags (100 pieces).
- Hood graphics.

### MATERIALS

Bin body and door: Durapol® material

### SPECIFICATIONS

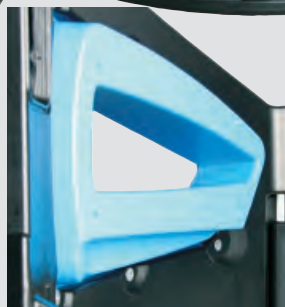
Height: 1177mm  
 Width: 1169mm  
 Depth: 591mm  
 Weight c/w steel liners: 51kg  
 Weight c/w Durapol material liners: 46kg  
 Liner capacity: 2 x 100 litres

## FEATURES



### Twin Door Opening System

With a twin door opening system and separate body compartments, Nexus 200 allows easy and quick access to both liners whilst minimising cross contamination between them.



### Extended Aperture Ledge

Minimises cleaning inside the bin as the extended aperture ledge ensures that litter will fall directly into the liner.



### Secure 3-point Locking System

The unique lift and lock mechanism engages the door with the bin body at three separate points, to provide a highly secure, vandal-resistant locking system. The door rises and self-returns to the locked position with a simple slam lock operation.

## OPTIONAL EXTRAS



### Ashtray

Cigarette ashtray with a 5ltr liner in Gun Metal Grey or Gold colour.



### Aperture Blanking Panel

Ideal for use when the bin needs to be sealed from public use temporarily.



### Sack Retention

An elastic sack retention belt securely holds the sack inside the liner.



### Base Tray

Provides a smooth base for easy cleaning.



### Glasdon FireSafe™ Automatic Suppression Device (600g)

Glasdon FireSafe automatic fire suppression device is fitted within the hood of the bin. Should a fire break out inside the bin the device is activated. Glasdon FireSafe is an effective low cost auxiliary device and must never replace primary fire prevention measures. A regular inspection/maintenance programme should be introduced to ensure the device is in working condition or has discharged and therefore needs replacing.

## BIN COLOURS

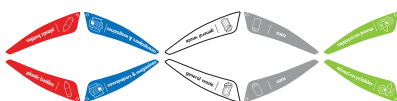


Black



Anthracite Grey

## TOP GRAPHICS (OPTIONAL EXTRA)\*



## STANDARD FRONT POSTERS\*



## STANDARD APERTURE PANELS\*



\*Other options are available upon request.

# External Recycling Bins Fixing Options

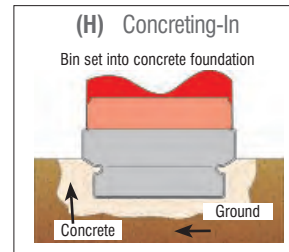
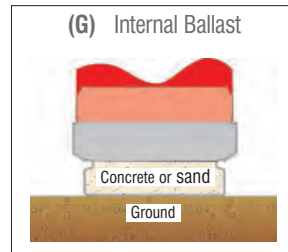
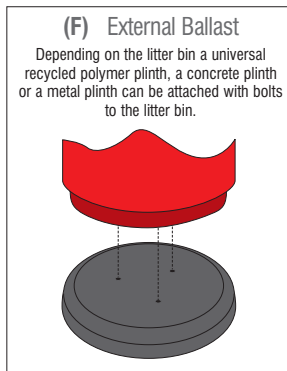
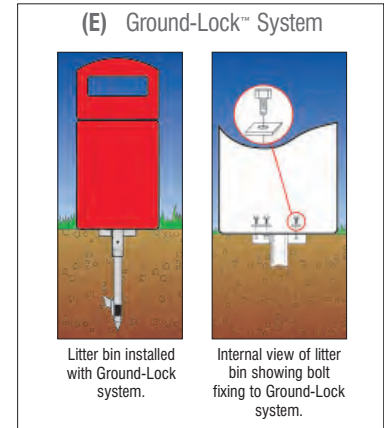
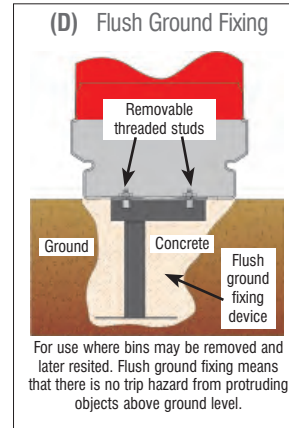
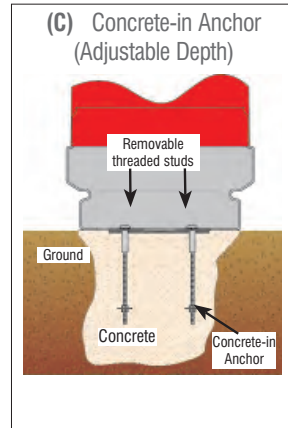
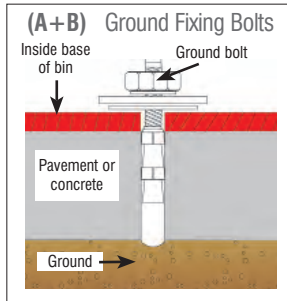
	Page Number	Paving Fixing Kit	Concrete Foundation Fixing Bolts	Concrete-in Anchor (Adjustable Depth)	Flush Ground Fixing	Ground Lock	External Ballast	Internal Ballast
		(A)	(B)	(C)	(D)	(E)	(F)	(G)
Please refer to the corresponding illustrations on the next page for more details on these fixing options.								
Electra Curve	56	✓	✓	✓	x	x	x	x
Gemini	62	✓ Incl.	✓ Incl.	✓	x	x	x	x
Glasdon Jubilee 110	58	✓	✓	✓	✓	✓*	x	✓
Glasdon Jubilee 240	58	✓	x	✓	x	x	x	✓
Modus	76	x	✓ Incl.	✓	x	x	x	x
Nexus City 140	64	x	✓	✓	x	x	x	✓
Nexus City 240	64	x	✓	✓	x	x	✓	✓
Nexus Evolution City	58	✓	✓	✓	x	x	x	x
Nexus 200	60	✓ Incl.	✓ Incl.	✓	x	x	x	✓
Nexus 360	68	✓ Incl.	✓ Incl.	✓	x	x	x	x
Streamline Jubilee	58	✓	✓	✓	x	x	x	✓
Visage	74	x	✓ Incl.	✓	x	x	x	x
Ground Surface		Concrete Paving Flagstone	Existing Concrete Foundation, or Concrete Pad Set in Soft Ground	New Concrete Foundation		Soft Earth	Suitable for Even Ground	

✓ Optional Extra

✓ Incl. Fixings are Free of Charge

X Not Available for this Recycling Bin

✓\* Requires Reinforcing Plinth



Glasdon Ground-Lock system is a versatile fixing system for securing hooded, open-topped and post-mounted litter bins in 'soft' or unsurfaced ground. Quick and easy to install, without excavating or concreting, the system has a unique 'remove and resite' locking feature, so bins can be relocated. Ground-Lock system is also vandal-resistant, the secure siting keeps waste in its place. (Ground-Lock system fixing tool required. One tool supplied free with every 3 Ground-Lock systems ordered.) Please see above which bins require a reinforcing plinth with the Ground-Lock option.