



Nexus® Style Recycling Bin

DESIGN FEATURES

- Available as 85 litre, 85 litre duo (40/40L), 170 litre duo (80/80L), 170 litre trio (80/40/40L) & 170 litre quad (40/40/40/40L) models.
- Open top design.
- A wide range of optional vinyl wraps are available.
- Full length door allows easy access to the liner.
- Magnetic door retaining strip.
- Dedicated apertures.
- Contemporary styling.
- Anodised and polished finish as standard.
- 100% recyclable extruded Vandalex® material panels.
- Armortec® coated frame.

OPTIONAL EXTRAS

- Front and top stickers are available in the standard graphic options.
- Personalisation.
- Rear foamex sign kit.
- Dedicated aperture panels.
- Divider strip for open apertures.
- Drip Tray for use with sack retention system.
- Keyed cam lock kit, easy to use with a standard key.
- Choice of zinc-coated steel liner or sack retention system.

MATERIALS

Body, aperture panels & divider: Steel with Armortec coating
Door: Vandalex material
Liner: Zinc coated steel
Sack retention: Stainless steel

COLOURS

Standard Body: Dark Grey Metallic
Standard Door: Polished Graphite
Optional Vinyl Wraps: Dark Grey Marble, Dark Teak, Pale Gold, Smoky Wood, Brushed Copper

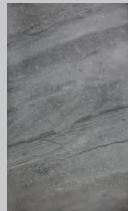


OPTIONAL EXTRAS

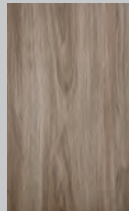
Sign Kit



STANDARD VINYL DOOR OPTIONS



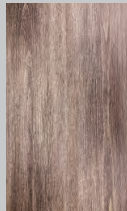
Dark Grey Marble



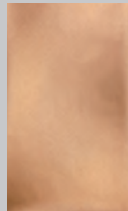
Dark Teak



Pale Gold



Smoky Wood



Brushed Copper

PERSONALISED VINYL DOOR OPTIONS* AND FULL BODY WRAPS

The door and body of Nexus Style can be personalised using vinyl wraps, to create a unique unit.

Contact our sales team today to discuss our free visualisation service!



*Price on application.

+Copyright images can not be reproduced for personalisation. The shown images may not be available. Customer to provide their own images for personalised wraps.

MODELS AVAILABLE:

Nexus Style 85
recycling bin



Height: 809mm
 Width: 452mm
 Depth: 438mm
 Capacity:
 with steel liner: 85 litres
 with sack retention system: 92 litres
 Weight with steel liner: 25kg

Nexus Style 85 Duo
recycling bin
(40/40L)



Height: 809mm
 Width: 452mm
 Depth: 438mm
 Capacity:
 with steel liner: 2 x 40 litres
 with sack retention system: 2 x 40 litres
 Weight with steel liners: 25kg

Nexus Style 170 Duo
recycling bin
(85/85L)



Height: 809mm
 Width: 892mm
 Depth: 446mm
 Capacity:
 with steel liner: 2 x 85 litres
 with sack retention system: 2 x 92 litres
 Weight with steel liners: 44kg

Nexus Style 170 Trio
recycling bin
(85/40/40L)



Height: 809mm
 Width: 892mm
 Depth: 446mm
 Capacity:
 with steel liner: 1 x 85 litres
 2 x 40 litres
 with sack retention system: 1 x 92 litres
 2 x 45 litres
 Weight with steel liners: 44kg

Nexus Style 170 Quad
recycling bin
(40/40/40/40L)



Height: 809mm
 Width: 892mm
 Depth: 446mm
 Capacity:
 with steel liner: 4 x 40 litres
 with sack retention system: 4 x 45 litres
 Weight with steel liners: 44kg

■ Nexus® Style 85 Recycling Bin

STANDARD APERTURE OPTIONS



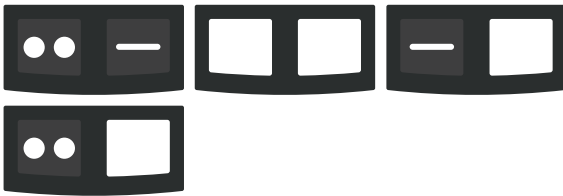
■ Nexus® Style 85 Duo Recycling Bin

STANDARD APERTURE OPTIONS



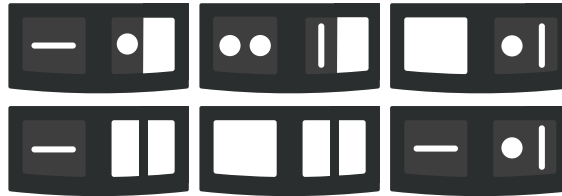
■ Nexus® Style 170 Duo Recycling Bin

STANDARD APERTURE OPTIONS



■ Nexus® Style 170 Trio Recycling Bin

STANDARD APERTURE OPTIONS



■ Nexus® Style 170 Quad Recycling Bin

STANDARD APERTURE OPTIONS



STANDARD DOOR & APERTURE GRAPHICS*



*Other options are available upon request.